



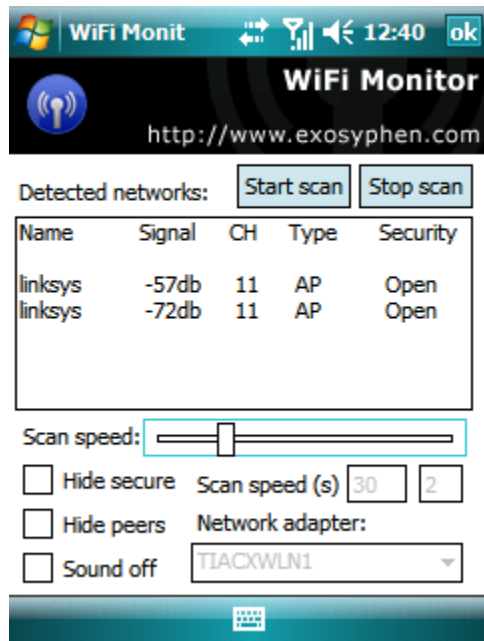
exosyphen studios

OP 1 CP 480, Cluj Napoca, 400110, Cluj, Romania
Phone : +4 0742 072 972
Fax : +1 610 229 5513
e-mail : support@exosyphenstudios.com

PocketPC WiFi Monitor Manual

Overview

PocketPC WiFi Monitor, is a small utility tool, that allows you to quickly scan for wireless networks around you, and display usefull information about them.



After you install and start WiFi Monitor, please select your settings:

- **Scan speed:** Move the slider to select between the minium (5 seconds) and maximum (140 seconds) time interval, at which scans are performed.
- **Hide secure:** It will hide the networks that are secure and require a WEP key to connect.
- **Hide peers:** It will hide peers (networks cards) that are detected.
- **Sound off:** Enable or disable sound alert, when a new network is found.

Press the "Start scan" button, to start scanning for networks. You can stop the scanner anytime, by pressing the "Stop scan" button.

If you want to change the scan speed, move the slider, and then press the "Start scan" button, to update the scan speed.

Note for demo users:

- The demo will only display the first 3 networks found
- Sounds alert is disabled in the demo
- The demo will quit after 20 scans.

Please visit our website at: <http://www.exosyphen.com> for additional information and ordering the registered version.
You may also visit our mobile website, from your device at: <http://mobile.exosyphen.com>

Installing PocketPC WiFi Monitor

Connect your PocketPC to your computer through its data cable or cradle, and wait until ActiveSync starts.
After that, run the installer for WiFi Monitor.
On your device, when prompted, choose to install WiFi Monitor in the device memory, or on the storage card.

Support and assistance

If you need any assistance with using our product, feel free to use our online contact form:
http://www.exosyphenstudios.com/page_contact.html
or email us at: support@exosyphenstudios.com